

MAR 106

Modular Ice Machine up to 720 kg

Item #:
Project:
Quantity:



FEATURES

- Scale ice machine, in "compact system" version; built-in unit. Storage bin not supplied, to be purchased separately.
- AISI304 Stainless steel evaporator and ice scraper blade. Redesigned evaporator compartment end-walls.
- Foodgrade ABS plastic water sump tray, easy remove for cleaning and sanitising.
- Electromechanical control panel. Electrical protections, rotation speed & reverse phase controls.
- Low- water sensor protection. Hermetic compressor. Storage bin thermostatic ice level sensor
- Drive motor / gear reducer with V-Belt drive.
- Stainless steel panels in scotch-brite finish, with rounded corners, easy to remove for maintenance.
- ON/OFF manual switch, with weekly programmable timer.



MAR 106
Scale ice
Residual water content 2%
Thickness 1 o 2 mm

CONDENSING SYSTEM

Air cooled
Water cooled

REFRIGERANT GAS

R404A

VOLTAGE V/Hz/ph

380/60/3N
400/50/3N

RECOMMENDED BINS

Head	Bins	kg
MAR 106	● UBH1100	553
	● UBH1600	812
	● UBH2250	1068
	● SIS700	318 + 73
	● SIS1350	613 + 73 + 73

LEGEND:

- ✓ : Perfect combination between ice maker and bin
- : Ice chute cut-out performed upon installation
- CBTxxxxxxx : need additional bin top

Certifications:



OPERATING REQUIREMENTS

	Minimum	Maximum
Air temperature	10°C	43°C
Water temperature	5°C	38°C
Water pressure	1 bar (14 psi)	5 bar (70 psi)
Electrical voltage	-10%	+10%

IMPORTANT NOTICE:
Models and specifications are subject to change without notice. This spec sheet is meant for commercial purpose only. For technical documentation please refer to our service manuals.

Download our free **App Scotsman Ice**
Apple store
Google play
Windows store



www.scotsman-ice.it
www.scotsman-ice.com

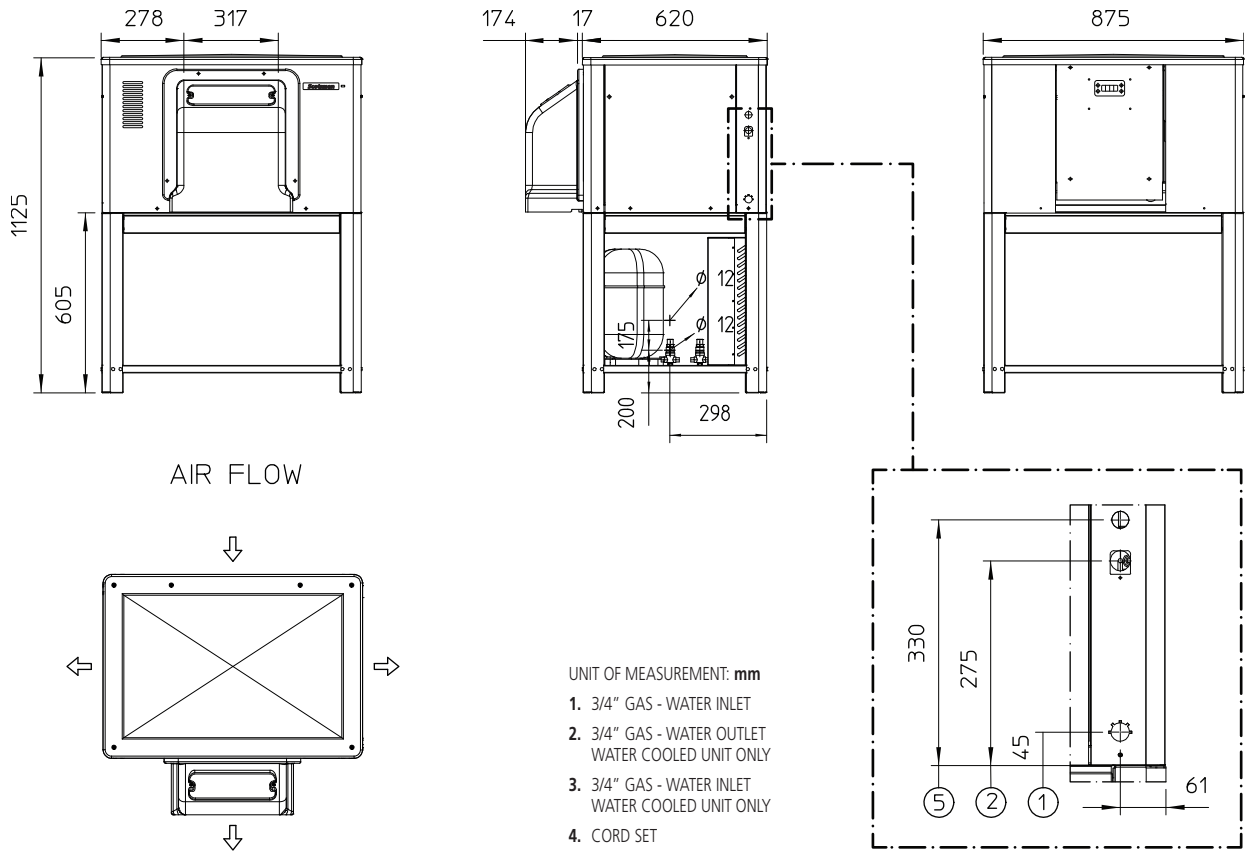
Modular Ice Machine up to 720 kg

MAR 106

Modular Ice Machine up to 720 kg

Item #:
Project:
Quantity:

Modular Ice Machine up to 720 kg



UNIT DATA			Compressor		Circuit wires		Max. fuse size					
			Version	Voltage	Btu/h	W	No.	Ømm ²	A			
Size (W x D x H)	906 x 636 x 1125 mm		MAR 106 AS	400/50/3N	15184	4450	5	2.5	16			
Net weight	188 kg		MAR 106 WS	400/50/3N	15184	4450	5	2.5	16			
SHIPPING DATA			MAR 106 AS	380/60/3N	14877	4360	5	2.5	20			
			Carton (W x D x H)	980 x 740 x 1230 mm								
Weight	205 kg											
			24 h ice production kg °C Amb. / °C Water			Energy consumption*		Water usage*	Instant power			
Version	Condensation	Voltage	10°C/10°C		21°C/10°C		32°C/21°C		kWh/100 kg	kWh/24h	l/h	W
			1 mm	2 mm	1 mm	2 mm	1 mm	2 mm				
MAR 106 AS	Air	400/50/3N	700	630	650	585	580	522	13.5	80.0	24.2	3500
MAR 106 WS	Water	400/50/3N	700	630	650	585	580	522	13.5	80.0	208.3	3500
MAR 106 AS	Air	380/60/3N	720		700		600		15.0	90.0	25.0	3900

(*) Data refer to 32°C Amb. / 21°C Water temperature conditions