

YOUR A300: CONFIGURED TO YOUR PREFERENCES

1 A300 OPTIONS

- Second grinder
- Bean hopper without hopper extension: 1 × 0,5 kg or 2 × 0,25 kg with hopper extension: 1 × 1,1 kg or 2 × 0,55 kg lockable
- One or two separate powder dosing systems: 1 × 0,5 kg or 2 × 0,5 kg (for chocolate or milk powder), lockable
- Coffee grounds ejector
- Steam wand (only available on MS EC models)
- Water connection or water tank 4,8l

2 MILK SYSTEM

- FoamMaster™ (FM): hot milk and milk foam, individually adjustable consistency, integrated cleaning system
- Milk system (MS): hot milk and milk foam, exact dosing via milk pump

2 CLEANING SYSTEM

- EasyClean (EC): automatic cleaning system with manual addition of the cleaning fluid. Perfect hygiene in just a few steps.

CONFIGURATION EXAMPLES

Numerous configuration options are available.



FLEXIBILITY

Our product portfolio allows various assembly options – tailored to your needs.



FRANKE

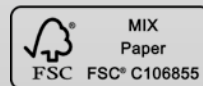
MAKE IT WONDERFUL

Franke Kaffeemaschinen AG
cs-info.ch@franke.com

Franke Coffee Systems GmbH
cs-info.de@franke.com

Franke Coffee Systems Americas
cs-coffeesales.us@franke.com

Franke Coffee Systems UK
sales@Frankecoffeesystems.co.uk



coffee.franke.com

590.0598.385/10.20/CH-EN/Subject to dimensional, design and version changes.

A300

Looking for a professional coffee machine but you assume you don't have enough space? With its intuitive, easy-to-use screen and consistent in-cup quality, our A300 provides a premium coffee experience in the most compact format. So, whether you're serving customers in a bakery, a small restaurant or employees in an office, this model has you covered. And if that wasn't enough, you can always rely on the A300 to produce an excellent cup of coffee no matter if it's being operated by your staff or an employee using the self-service option.

CAPACITY*	SINGLE	PARALLEL
Espresso	124	163
Cappuccino	92	131
Coffee	80	92
Hot water	96	

*Cups per hour according to DIN 18873



EASYSYSTEM
Automatic cleaning system – perfect hygiene in just a few steps



TOUCH SCREEN
Easy to use even for new users



FOAMMASTER™
For perfect foam, every time

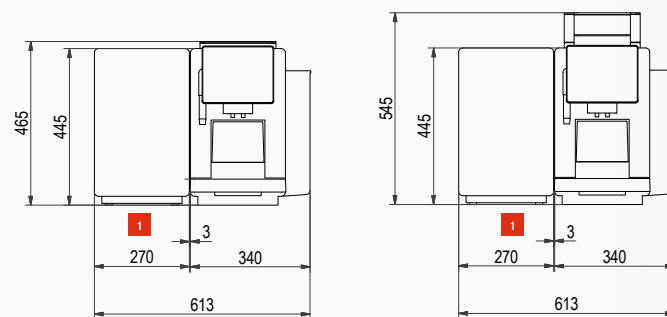
FRANKE

MAKE IT WONDERFUL

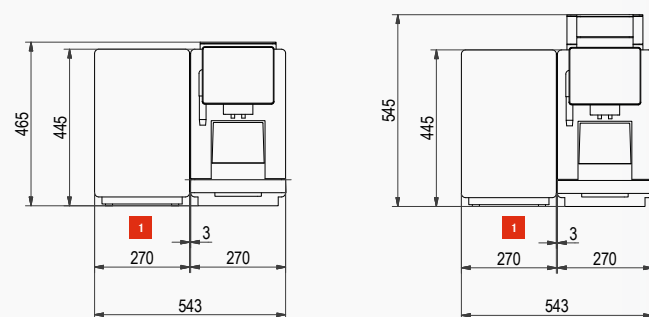
TECHNICAL DATA

MACHINE MODELS

Model	Power
A300	220-240 V 1LNPE 50/60 Hz 2.1-2.3 kW (10 A)
A300 MS EC	220-240 V 1LNPE 50/60 Hz 2.1-2.3 kW (10 A)
A300 FM EC	220-240 V 1LNPE 50/60 Hz 2.1-2.3 kW (10 A)
Dimensions with water tank	Without hopper extension, without powder dosing system 340 mm / 465 mm / 587 mm (W / H / D) With hopper extension, with powder dosing system 340 mm / 545 mm / 587 mm (W / H / D)
Dimensions with water connection	Without hopper extension, without powder dosing system 270 mm / 465 mm / 587 mm (W / H / D) With hopper extension, with powder dosing system 270 mm / 545 mm / 587 mm (W / H / D)
Weight (empty)	approx. 25 kg



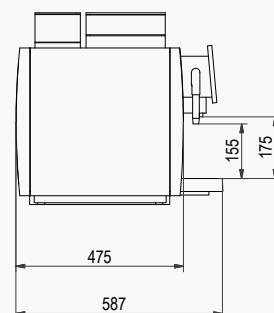
Option with internal water tank



Option with water connection

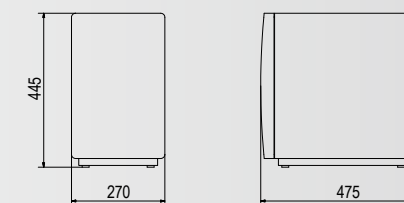
WATER CONNECTION

Fixed water connection	Metal hose with union nut G3/8", L = 1500 mm
Water supply line	If possible on installation side: untreated water of drinking water quality (not from household decalcification system)
Water pressure	80-800 kPa (0.8-8.0 bar)
Flowrate	>0.1l/sec
Water temperature	<25°C
Total hardness	4-8 °dH GH (German total hardness) / 7-14 °fH GH (French total hardness) / 70-140 ppm (mg/l)
Carbonate hardness	3-6 °dH KH (carbonate hardness) / 50-105 ppm (mg/l)
Acid content/pH value	6.5-7.5 pH
Chlorine content	<0.5 mg/l

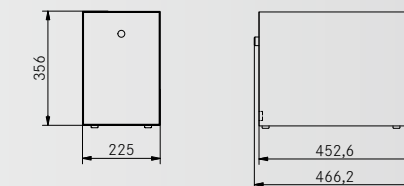


ADD-ON UNITS

COOLING UNIT	SU05 EC (5 I)
Electrical connection	220-240 V 1LNPE 50/60 Hz 0.72 A (10 A)
Dimensions	270 mm / 445 mm / 475 mm (W / H / D)
Weight (empty)	approx. 20 kg
Compatible with	Model A300 MS EC / A300 FM EC
Color	Black



COOLING UNIT	KE200 (4 I)
Electrical connection	220-240 VAC, 1L N PE, 82 W, 10 A, 50-60 Hz
Dimensions	225 mm / 356 mm / 453 mm (W / H / D)
Weight (empty)	approx. 13 kg
Compatible with	Model A300 MS EC / A300 FM EC
Color	Stainless steel



ACCOUNTING SYSTEM	AC125CL
Electrical connection	85-264V 1LNPE 50/60 Hz (10A)
Dimensions	125 mm / 150 mm / 310 mm (W / H / D)
Weight (empty)	approx. 2 kg
Color	Black



WATER DRAIN

Drain hose	Dia. = 16 mm, L = 2000 mm
-------------------	---------------------------