



Scan for video



QUICK START GUIDE

## Start Here

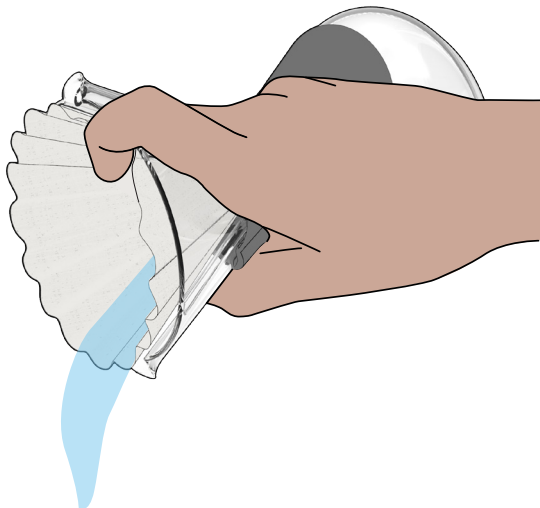
To brew perfect coffee with Smart Brew™ Hourglass Brewers, we recommend using a Brewista® Smart Pour™ Gooseneck or Stout Spout™ Kettle for ultimate control.

1



- Bring enough water to just below a boil in order to brew the coffee and preheat the Smart Brew™ Hourglass Brewer.

3



- Keep filter in place and dispose of the preheated water.

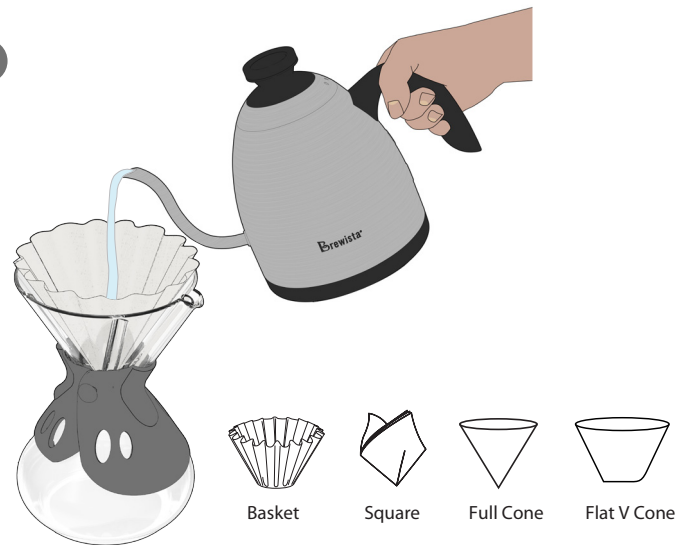
## • Features



- Works with virtually any style paper coffee filter!
- Vent tube ensures consistent brewing
- Tempered borosilicate glass
- Thick, protective silicone wrap
- Interior profile prevents filters from sticking
- 3, 5, and 8 cup sizes

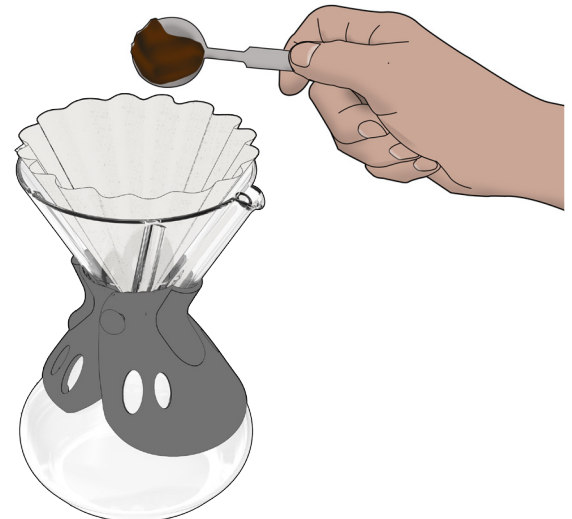


2



- Place **any** style paper filter into the Smart Brew™ Hourglass Brewer, and dampen the filter with the heated water.

4



- Add one tablespoon of medium ground coffee to the filter for every 5 ounces of water to be used.

5



- Start a timer.
- Pour in just enough water to saturate all of the grounds evenly.
- Allow to bloom for 35 seconds.
  - To use the timer on any Brewista® variable temperature kettle, simply remove the kettle from the base and press the “+” button.

6



- After the bloom, slowly pour in the remaining pre-measured water using a circular motion.
  - Pace yourself to complete pouring at around 3:30.

7



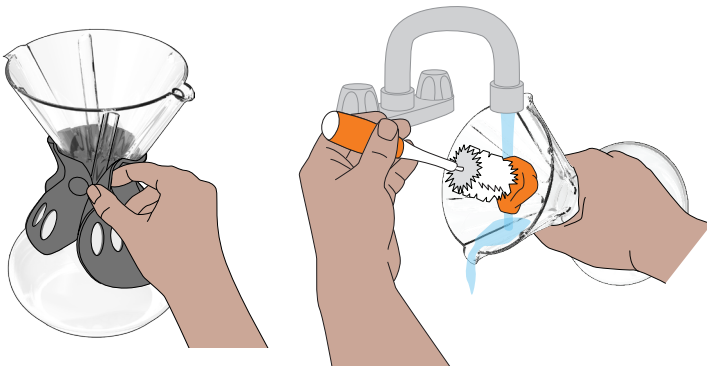
- Discard the filter and grounds

8



- Pour your perfectly brewed coffee from the spout without the vent tube.
- Sip and enjoy!

## • Cleaning



- Remove silicone wrap.
- Hand wash glass and silicone wrap separately.



**Brewista®**

Smart Brew™ Hourglass Brewers  
3, 5, and 8 cup sizes